

PRE-UNIVERSITY STUDIES



DK193(P)

MAHSA
INTERNATIONAL COLLEGE
— PENANG —

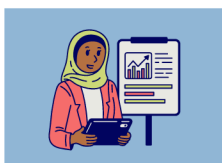
www.micp.edu.my

Welcome to the **Centre for Pre-University**, where a strong academic foundation is regarded as the essential first step towards achieving one's academic and professional aspirations. Whether pursuing a career as a doctor, dentist, chemist, engineer, or entrepreneur, students begin their journey here through programmes thoughtfully designed to prepare them for undergraduate studies. The Centre provides a comprehensive blend of academic knowledge, practical skills, and the appropriate mindset required for success in higher education, with a strong emphasis on cultivating critical thinking, effective communication, and problem-solving abilities relevant to today's dynamic and competitive landscape. Guided by dedicated lecturers, students benefit from an interactive, student-centred learning environment supported by a curriculum aligned with international standards and enriched with industry-relevant exposure. The Centre for Pre-University offers clear progression pathways to a wide range of undergraduate programmes at MICP, MAHSA University, and partner institutions, and remains committed to developing well-rounded individuals who are prepared to meet future challenges across the fields of science, technology, healthcare, and business.

ABOUT MAHSA INTERNATIONAL COLLEGE, PENANG

MAHSA International College, Penang (MICP), established in 2006, is a distinguished institution in private education, having trained over 1,000 students. Renowned for its academic excellence, MICP offers the Doctor of Dental Surgery (DDS) programme, which is meticulously designed to integrate rigorous theoretical instruction with extensive clinical exposure. The programme comprises two years of pre-clinical studies at MAHSA University's Saujana Putra Campus, followed by three years of intensive clinical training at the MICP campus in Butterworth, Penang, ensuring the development of strong academic foundations and advanced clinical competence. MICP is further supported by a modern, state-of-the-art dental centre that upholds high standards of training and patient care, and also offers one-year Foundation in Science (FIS) and Foundation in Arts (FIA) programmes that provide a comprehensive blend of theoretical and practical learning, enabling students to progress to relevant degree programmes at MAHSA University or pursue the DDS programme at MICP in support of their academic and professional advancement.

WHY STUDY FOUNDATION AT MICP?



Excellent
Academic Staff



Competency-
Based Training



1-Year
Programme to
Degree



Fully-equipped
Facilities



Good Student-
to-Lecturer
Ratio

PROGRAMME STRUCTURE

FOUNDATION IN SCIENCE

KPT/JPS(N/0011/3/0008)(MQA/FA15858)(08/27)



DURATION: 12 MONTHS (3 SEMESTERS)

12 MONTHS

SEMESTER 1

- English I
- Thinking Skills
- Biology I
- Physics I
- Basic ICT

SEMESTER 2

- Chemistry I
- Mathematics I
- Biology II*
- Introduction to Psychology *
- Physics II **
- Introduction to Programming **

SEMESTER 3

- Chemistry II
- Mathematics II
- English II
- Co-Curriculum
- Biochemistry *
- Engineering Mathematics **



*Life Sciences (Dentistry, Medicine, Pharmacy etc.)

** Physical Sciences (Engineering, Computing etc.)

ENTRY REQUIREMENT

*Entry requirements are subject to changes.

- Pass SPM/O-Level with a minimum of 5 credits, including Mathematics and 2 other science subjects with a pass in Bahasa Melayu and English or its equivalent; or
- Pass UEC with a minimum Grade of B in Mathematics and 2 other science subjects with a pass in Bahasa Melayu and English or its equivalent; or
- Acceptable to MQA/MOHE or relevant professional bodies.

To further studies in Dentistry, Medicine, and Pharmacy, student must have:

- Pass SPM/O-Level with a minimum of five Bs in Biology, Chemistry, Physics and Mathematics (or Additional Mathematics) and one other subject, with a credit in Bahasa Melayu and English or its equivalent; or
- Pass UEC with a minimum of Grade B in 3 subjects, including Biology, Chemistry, Physics or Mathematics or Advanced Mathematics; or
- Acceptable to MQA/MOHE or relevant professional bodies.

EDUCATION PATHWAY

- SPM /O-Level/ UEC
Homeschooling or Equivalent

- MICP Foundation in Science (1 year)
@ Butterworth Campus

- Doctor of Dental Surgery (MICP DDS-5 years)* Year 1 & 2 :
Saujana Putra Campus, MAHSA University
- Year 3, 4 & 5 : MICP,
Butterworth Campus,
Penang or other
relevant programmes
with affiliate colleges /
universities.

- MBBS
- Dentistry
- Health Science
- Nursing
- Biomedical Science
- Engineering
- Pharmacy

*Subject to programme entry requirements.

WHY STUDY FIS AT MICP?

- Experienced and qualified lecturers

- Career development and networking opportunities with supportive and inclusive environment

- FIS is awarded by MICP a reputed higher education institution in Malaysia

- Pre-integration opportunities into dentistry lifestyle & privileged pathway to dentistry at MICP

PROGRAMME STRUCTURE

FOUNDATION IN ARTS

KPT/JPS(N/0011/3/0172)(MQA/PA17614)(10/29)



DURATION: 12 MONTHS (3 SEMESTERS)

12 MONTHS

BUSINESS

SEMESTER 1

- English I
- Thinking Skills
- Basic ICT
- Essential of Economics
- Introduction to Management

SEMESTER 2

- Mathematics
- Introduction to Law
- Management Accounting
- Writing & Research Skills / Introduction to Visual Arts / Introduction to Finance (Choose 1 course)

SEMESTER 3

- English II
- Co-Curriculum
- Financial Accounting
- Introduction to Marketing
- Introduction to Psychology / Introduction to Mass Media and Communication / Introduction to Legal Skills (Choose 1 course)

HUMANITIES

SEMESTER 1

- English I
- Thinking Skills
- Basic ICT
- Essential of Economics
- Introduction to Management

SEMESTER 2

- Mathematics
- Introduction to Law
- Writing & Research Skills
- Introduction to Finance / Introduction to Visual Arts (Choose 1 course)

SEMESTER 3

- English II
- Co-Curriculum
- Introduction to Psychology
- Introduction to Sociology
- Introduction to Mass Media and Communication or Introduction to Legal Skills (Choose 1 course)

SCAN HERE



ENTRY REQUIREMENT

*Entry requirements are subject to changes.

REQUIREMENTS

SPM / O-LEVEL OR EQUIVALENT : Pass with five credits in any subjects

EDUCATION PATHWAY

- SPM/O-Level/ UEC Homeschooling or Equivalent

- MICP Foundation in Arts (1 year) @ Butterworth Campus

Bachelor's degree programmes upon completing Foundation in Arts:

- Communication
- Education
- Media Studies
- Law
- Arts
- Creative Arts

WHY STUDY FIA AT MICP?

- Practical learning, presentations & critical thinking development

- Strong foundation for business, psychology, communication & management degrees

- Supportive campus environment with student activities & networking opportunities

- Attractive progression opportunities into MAHSA's recognised degrees

MICP ALUMNI



Prem A/L Murugaiah

Foundation in Science

My decision to join the Foundation in Science program marked a major turning point in my academic life. My experience was greatly shaped by the lecturers' encouragement and enthusiasm, as well as by the inclusive and cooperative learning environment. I initially found Chemistry quite challenging, but with constant help, tailored advice, and additional tutorials provided, I progressively grew confident and improved significantly. Along with improved academic performance, this improvement restored my self-confidence.

Farah Shahirah

Foundation in Science

One of the turning points in my academic career was enrolling in the Foundation in Science program. The systematic approach to learning and the friendly, informed professors created an environment where I felt motivated and supported. Particularly, mathematics turned into a topic I actually started to find interesting. It was greatly appreciated that the lecturers consistently prioritised critical thinking and provided ample opportunity for queries. Their help not only sharpened my abilities but also revealed a real passion in that subject.



Neha Manoj

Foundation in Science

When I think back on my journey, I am very grateful for it. Pursuing the Foundation in Science was one of the best decisions I've ever made. The guidance and encouragement of the committed instructors at MAHSA University and MICP had a significant impact on both my academic and personal growth. I'm grateful for the opportunities I was given, the challenges that pushed me to develop, and the friendships that made the experience more enjoyable.

FACILITIES



Simulation Lab



Polyclinics



Multidisciplinary Lab



Lecture Hall



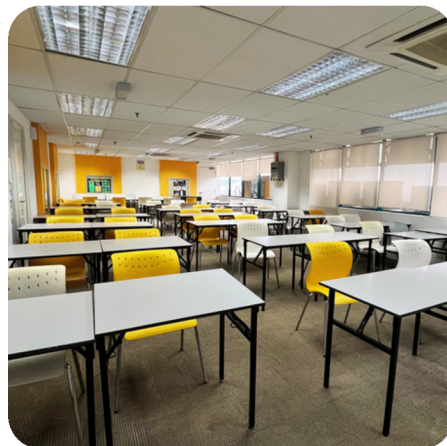
Library



Student Lounge



Student Reception Area



Reading Room



Classroom

ACTIVITIES



WHY STUDY IN PENANG?



Reputable Education & Healthcare Hub



Affordable Student Living



Safe, Student-Friendly City



Cultural & Heritage Learning Experience



Balanced Lifestyle:
Study, Nature & City Life



Excellent Food Culture



Convenient Connectivity



Vibrant Student Community & Activities

CONTACT DETAILS

MARKETING & PROMOTIONS CENTRE



+6012 203 8638/ +6012 938 7432/
+6012 322 7432/ +6012 334 7432/
+6012 998 7432 / +6012 742 7432



admission@micp.edu.my



www.micp.edu.my



MAHSA INTERNATIONAL COLLEGE, Penang
Level 18, NB Tower, Jalan Bagan Luar,
12000 Butterworth, Penang, Malaysia.

ACADEMIC PARTNER



Follow us on:



MICPOFFICIAL

**MICP reserves the right to modify or cancel any statement/schedule in the prospectus/promotional materials and accepts no responsibility for any consequences of such modifications or cancellation.*